



## PET MASTER OIL-FREE RECIPROCATING COMPRESSORS



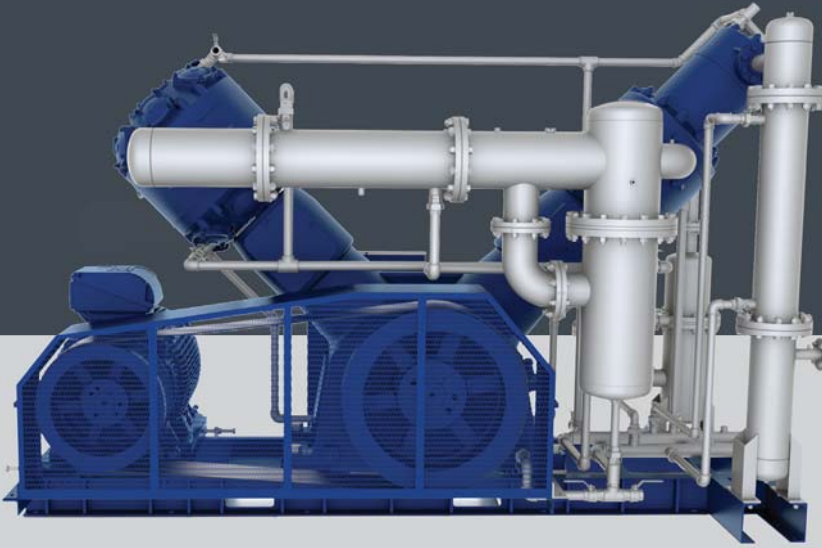
### STANDARD EQUIPMENT

High quality components such as IP55 electric motors with the IE3 efficiency class, star-delta motor starter system, electrical materials selected according to IEC, UL/cUL, CE standards as per the market requirements, durable compressor blocks are provided as standard in all our products.



### ADVANTAGES

HERTZ PET MASTER Series are reliable and high performance oil free reciprocating air compressors used in the pet bottling, food and health industries. Pet Master Compressors provide 100% oil-free pressurized air as no oil is used in the compression chamber. They operate between 0 and 40 Bar. As they have an integrated structure, they occupy less space and provide ease of installation.



## MAIN MOTOR AND DRIVE SYSTEM

- High efficiency 400V/3 phase/50Hz IE3 IP55 electric motor
- Special loadless start system and automatic discharge system for loadless start



## CONTROLLER\*

- Advanced, high-definition, userfriendly 7" color touchscreen
- High speed, industrial type PLC infrastructure with robust construction
- Encrypted Access Protection system with various levels of authorization.
- Display of relevant data on the screen clearly, trend graph recording and active monitoring
- Alarm History Record for the last 100 alarms
- Ethernet / ModBus communication functions as standard
- Remote monitoring and control feature / Compliance with GSM, internet and Industry 4.0
- Flexible programmable/expandable Input /Output structure



\*Only on Pet Plus and Wave reciprocating models with high pressure

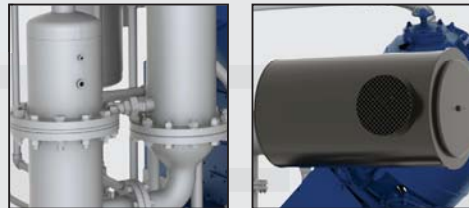


## PET MASTER Oil-Free Reciprocating Compressors

HERTZ PET MASTER Series are reliable and high performance oil free reciprocating air compressors used in the pet bottling, food and health industries.

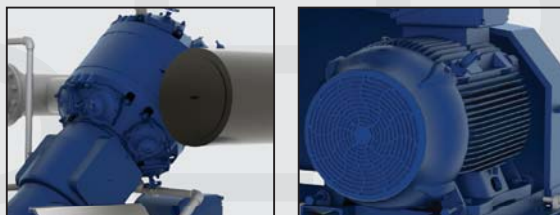
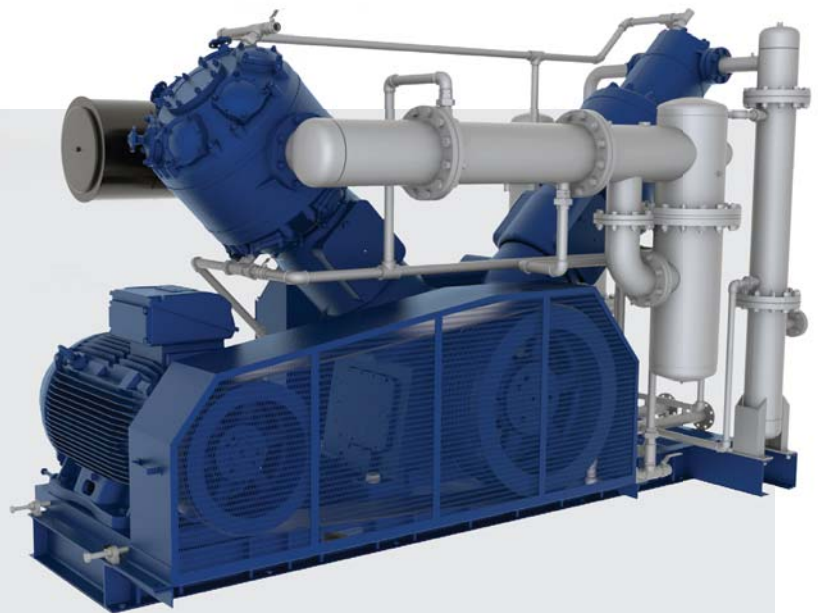
### ADVANTAGES

- Pet Master Compressors provide 100% oil-free pressurized air as no oil is used in the compression chamber.
- They operate between 0 and 40 Bar. As they have an integrated structure, they occupy less space and provide ease of installation and installation.



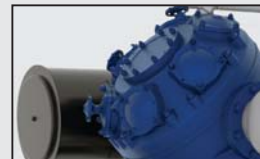
### GENERAL SPECIFICATION

- For intercoolers and aftercoolers, stainless steel pipe is used which is more efficient in terms of heat transfer and more resistant to corrosion.
- The structure of the coolers is designed to transfer air through the pipe and water through the body wall. Thanks to their compact design, pipe-type coolers are easy-to-maintain and their cooling efficiency is high.
- Compressor provides energy saving by operating with Load / Unload control system within maximum and minimum pressure set values determined according to system requirements.
- Its large body and low speed operation feature reduce the workload of the compressor.
- The integrated electrical system provides user-friendly operation.



## CONTROLLER

- Advanced, high-definition, user friendly 7" color touchscreen
- High speed, industrial type PLC infrastructure with robust construction
- Encrypted Access Protection system with various levels of authorization.
- Display of relevant data on the screen clearly, trend graph recording and active monitoring
- Alarm History Record for the last 100 alarms
- Ethernet / ModBus communication functions as standard
- Remote monitoring and control feature / Compliance with GSM, internet and Industry 4.0
- Flexible programmable/expandable Input /Output structure



## TECHNICAL DATA

MODEL	Pressure	R.P.M	Capacity	MOTOR POWER kW/HP	DIMENSIONS mm			WEIGHT kg
	Bar				m <sup>3</sup> /min	Width	Length	
PET MASTER 50	40	500	3	37	1750	3400	2000	3500
PET MASTER 75	40	220	4.5	55	2550	4400	2500	6500
PET MASTER 100	40	295	6	75	2550	4400	2500	6500
PET MASTER 125	40	370	7.5	90	2550	4400	2500	6500
PET MASTER 150	40	380	10,5	110	2550	5100	2900	9000
PET MASTER 180	40	460	13,0	132	2550	5100	2900	9000
PET MASTER 220	40	500	15,5	160	2550	5100	2900	9000
PET MASTER 270	40	375	19,2	185	2420	4400	3230	11000
PET MASTER 300	40	450	23	220	2420	4400	3230	11000

**hertz**  
KOMPRESSOREN